

www.pro-jet.nl

info@pro-jet.nl

 **ProJet B.V.**

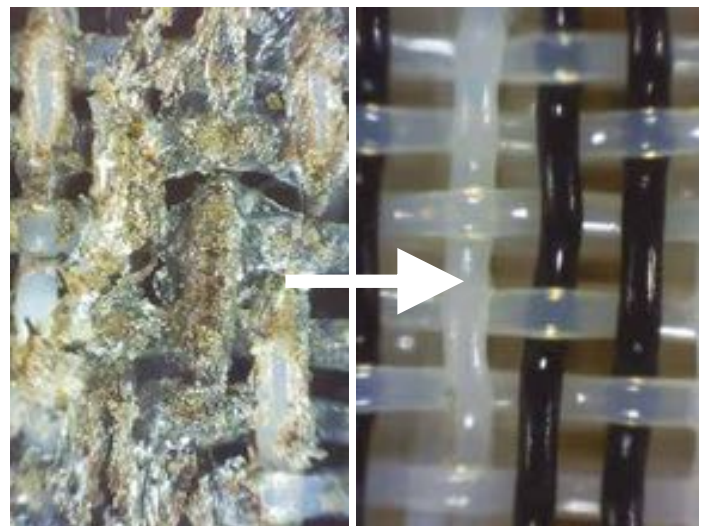
Professional high pressure water jet technology

Power Cleaner



Continuous high pressure shower for:

- **Forming Fabrics**
- **Press Felts**
- **Dryer Fabrics**

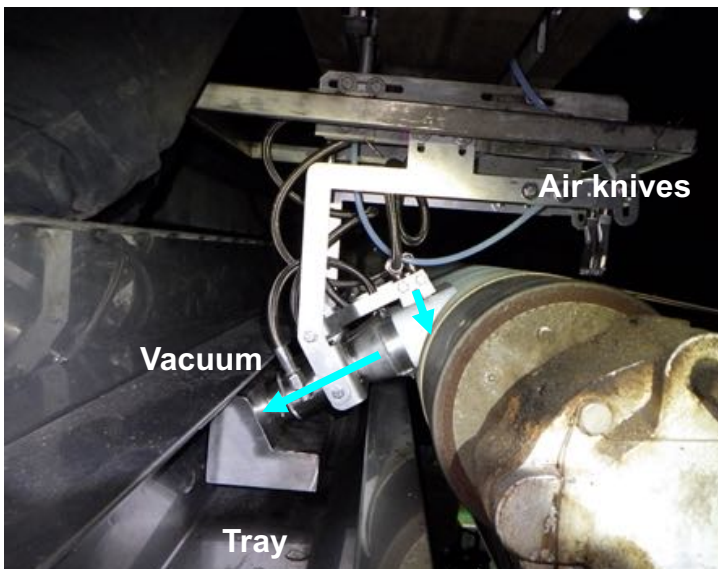


Dryer Fabrics



24 / 7 cleaning:

A clean dryer fabric, with consistently high air permeability, delivers important productivity and performance advantages for dryer section applications. The desired end result, of a clean dryer fabric, is a substantial improvement in available dryer capacity. The ProJet system consumes very little water, compressed air, or electrical energy. This innovative cleaning system is being applied successfully to very low basis weight product as well as heavy weight paper board applications.



Continuous cleaning mode:

- Max. 500 bar – 7,500 psi
- Per nozzle: 0,5 ltr/min – 0.12 gpm
- Air: 0.5 m³/min – 18 cfm

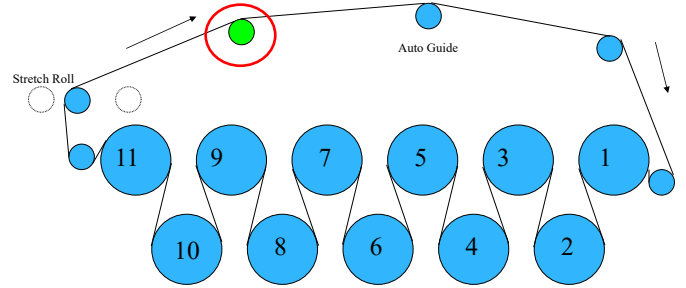
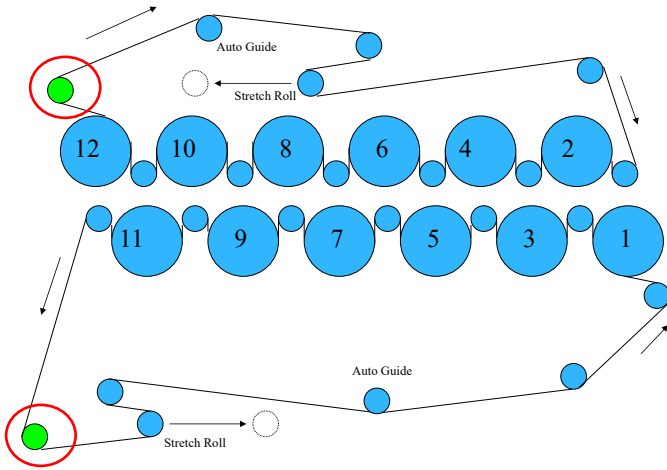


Batch cleaning mode:

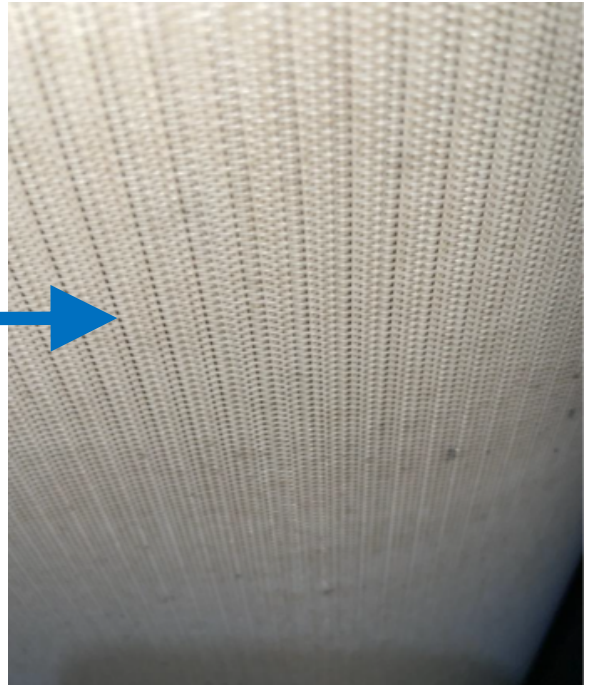
- Max. 80 bar – 1,200 psi
- Total: 15,0 ltr/min – 2.5 gpm

Dryer Fabrics

Typical installation positions



Highest cleaning efficiency



Clean a dirty dryer fabric **within 12-24 hours** and then maintain this cleanliness 24 / 7

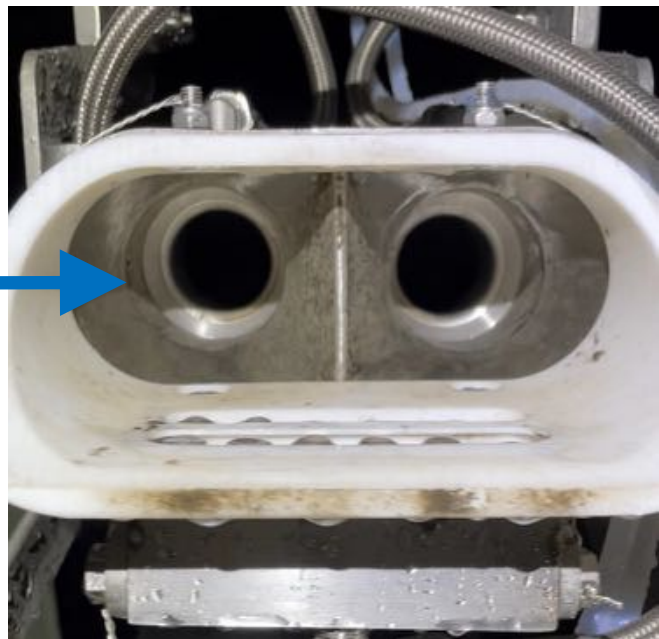
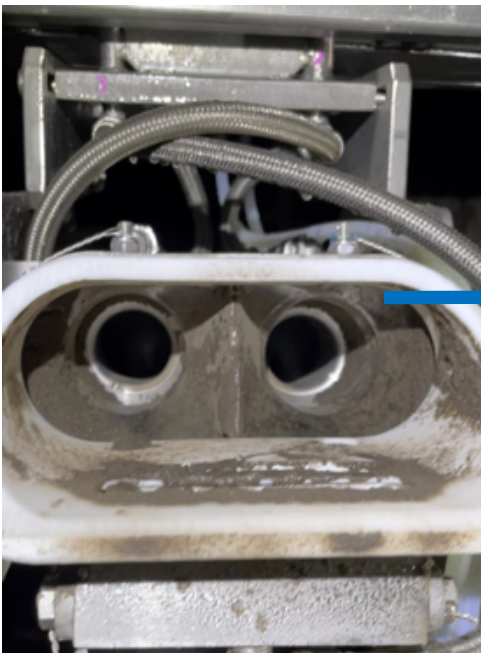
Dryer Fabrics

Automatic self cleaning station outside dryer hood



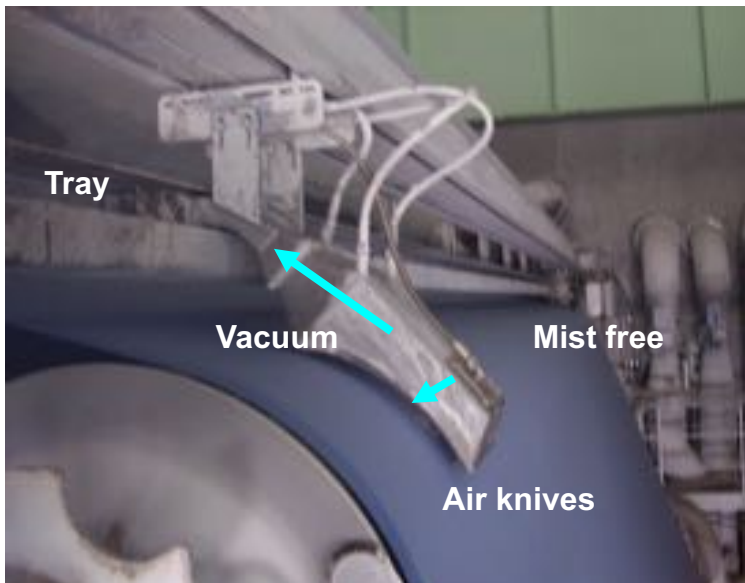
- Outside dryer hood: easy access
- Maintenance position
- Fully enclosed
- Fully automatic cycle
- 3 stage flushing: outside – inside – venturi flush

Three stage auto-cleaning



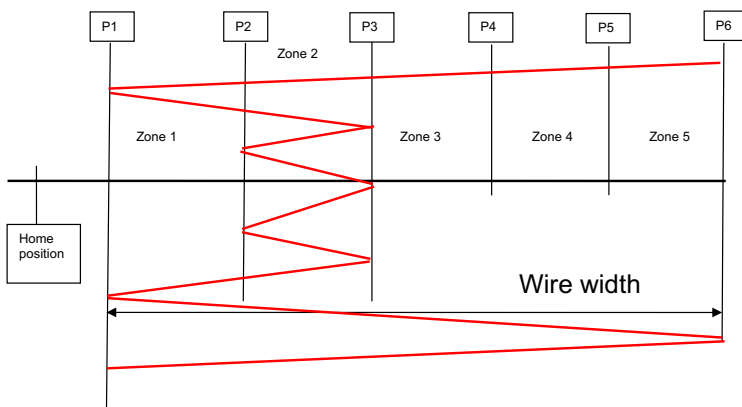
Vacuum stays clean & open > optimum vacuum performance & no manual intervening required

Forming Fabrics



Benefits:

- Mist free
- Up to 95% reduction of water consumption
- Strip- & Zone cleaning
- Discharge of contamination and stickies
- Park Position outside forming wire area
- Different cleaning angles
- Automatic self cleaning station
- Also for Tissue machines



Strip- & Zone cleaning



Park position outside machine



Conventional showers use extreme amounts of water

ProJet Cleaner:

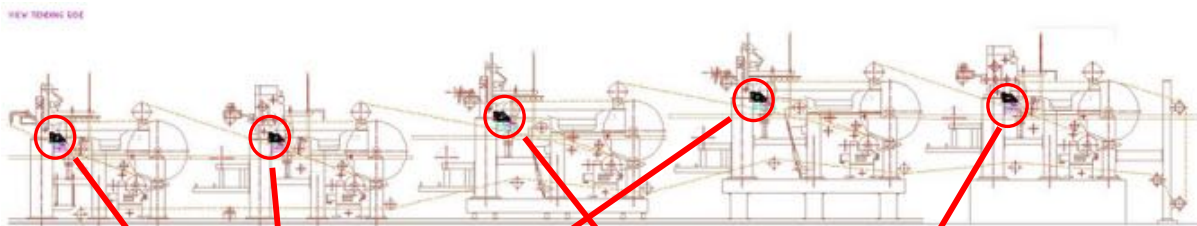
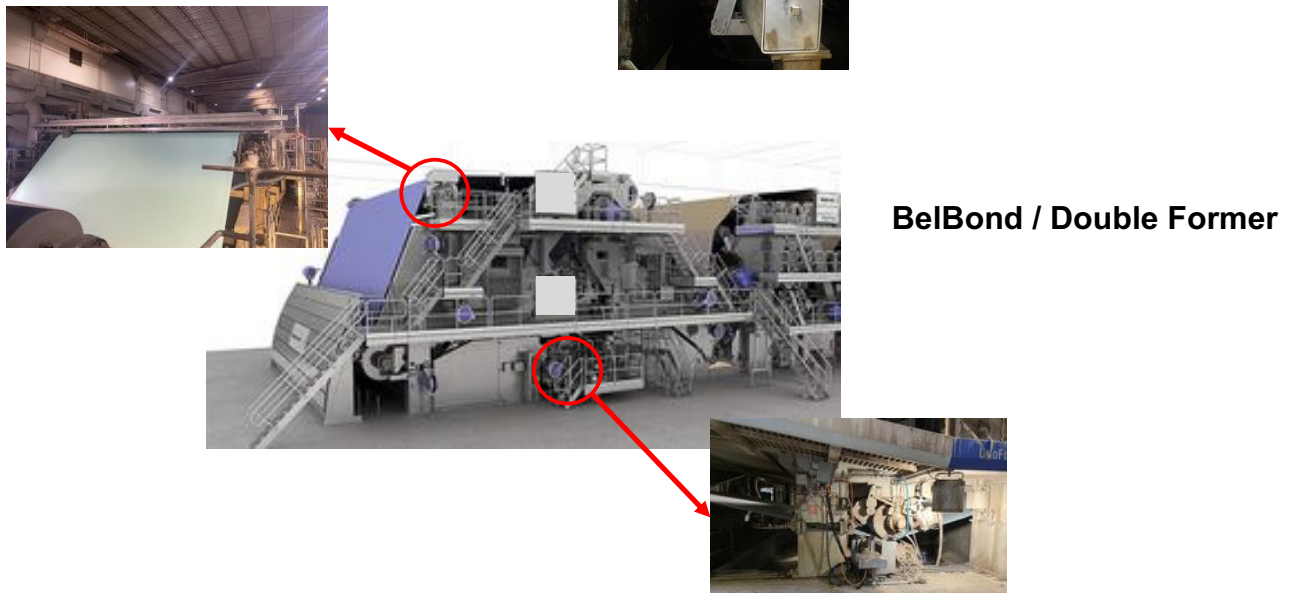
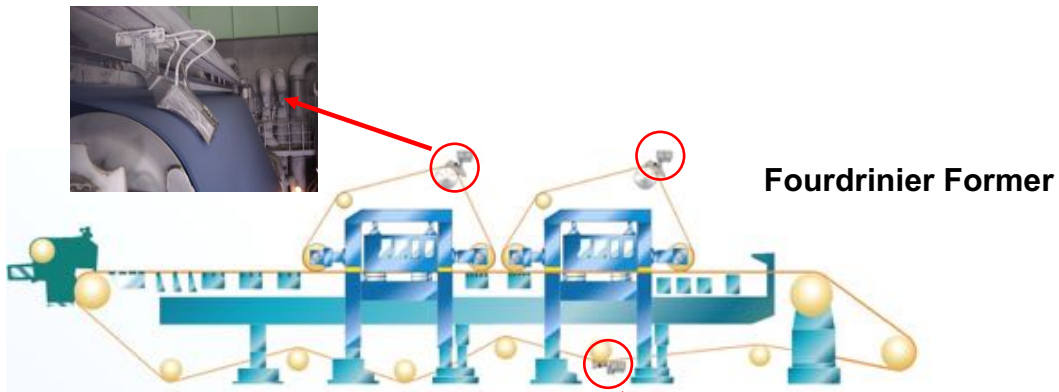
- Max. 220 bar – 3,500 psi
- Total 5,0 ltr/min – 1.2 gpm
- Air: 0.8 m³/min – 25 cfm

Up to 95% savings in water consumption

Contact info@pro-jet.nl for a complete ROI-calculation

Forming Fabrics

Typical layouts on Former Sections



Former 5 Former 4 Former 3 Former 2 Former 1



Cylinder Board Former

Press Felts



Benefits:

- Mist free
- Up to 85% reduction of water consumption
- Strip- & Zone cleaning
- Discharge of contamination and stickies
- Park Position outside forming felt area
- Different cleaning angles
- Automatic self cleaning station
- Maintain high dewatering ability throughout lifetime



Park position outside machine



For Tissue felts



ProJet Cleaner:

- Max. 50 bar – 750 psi
- Total 4,0 ltr/min – 1.0 gpm
- Air: 0.5 m³/min – 18 cfm

Up to 85% savings in water consumption

Contact info@pro-jet.nl for a complete ROI-calculation

System layout & services



Pump(s), control cabinet, control panels, HMI:

- Can all be sized for multiple Cleaners
- Filtration integrated
- Local and remote control panels
- Integration in or feedback to DCS
- ProJet can comply with your mill standards

Services:

- Kick-off meetings & measure up visits
- Engineering (3D design)
- Installation supervision
- Commissioning
- Training on operation, safety & maintenance
- Worldwide service visits / local service
- Local warehouses for spare parts



ProJet b.v.
Industrial Zone Weerterveld 51
Meerssen, Netherlands
Tel: +31 43 365 5006
info@pro-jet.nl
www.pro-jet.nl